

SPEIRS MAJOR

Manhattan West,
New York, USA

LIGHT ARCHITECTURE

8 Shepherdess Walk
London,
N1 7LB
United Kingdom

T +44 (0)20 7067 4700

Co-lab Shibuya Cast
23-21, Shibuya 1-Chome
Tokyo 150-0002
Japan

T +81 (0)3 3400 8855

info@smlightarchitecture.com
press@smlightarchitecture.com

SPEIRS MAJOR



By preserving openness and supporting easy permeable connections to and from nearby major transport hubs, light supports a thriving retail environment and creates opportunities for social interaction, while celebrating the sculptural qualities of the architecture with a high-impact external image.

CLIENT
Brookfield Properties

DATE
2015 - 2023

ARCHITECT
Skidmore, Owings & Merrill (SOM)

LANDSCAPE ARCHITECT
Field Operations

LIGHTING
IMPLEMENTATION
(STAGES 4-6)
Jaros, Baum & Bolles

PHOTOGRAPHER
Dave Burk © SOM,
Dave Morris

PROJECT TEAM
Mark Major, Carrie
Donahue Bremner,
Dave Morris, Martin
Fiera Alessandri

SPEIRS MAJOR



SPEIRS MAJOR

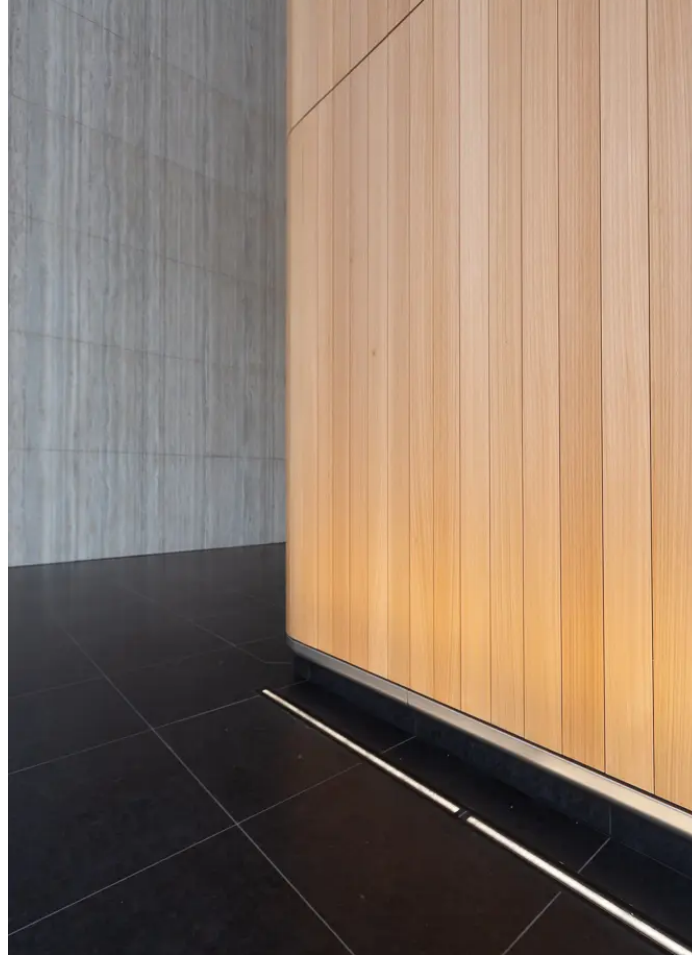


Located at the northeast and southeast corners of the site, the triple-height, transparent lobbies act as an extension of the central plaza, with views through to and from Ninth Avenue. Our approach to lighting for these spaces is focused on celebrating the unique architecture and materiality of each lobby while preserving a sense of openness and transparency after dark.

SPEIRS MAJOR



SPEIRS MAJOR

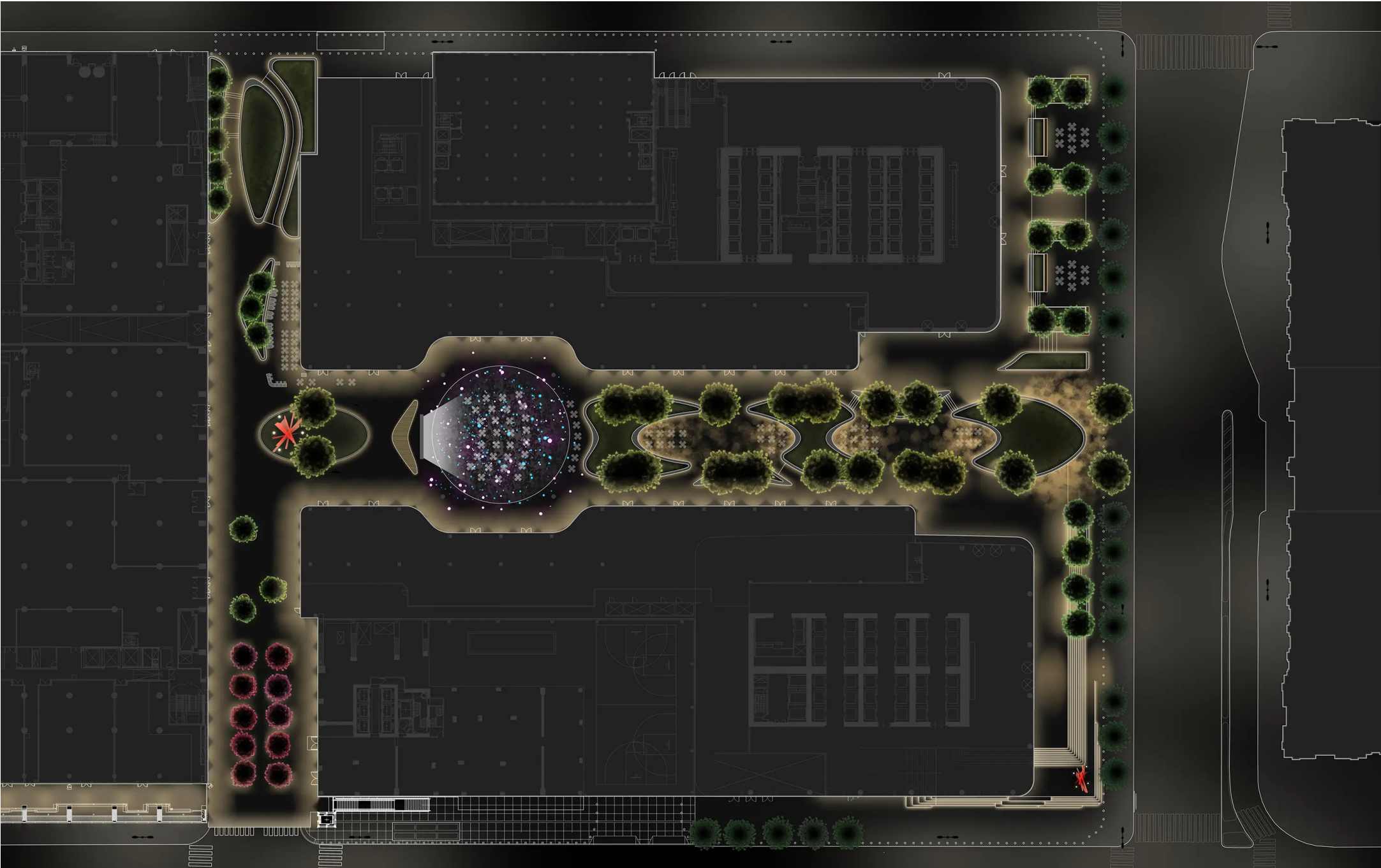


In a similar approach, the timber core of Two Manhattan West (South tower) is washed with light that draws the eye and brings out its warmth and grain.

SPEIRS MAJOR



SPEIRS MAJOR



SPEIRS MAJOR

